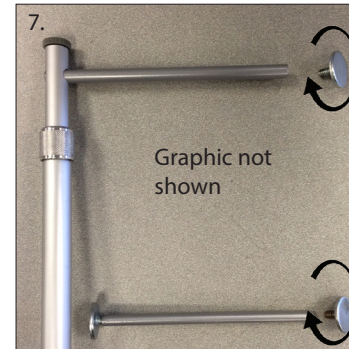
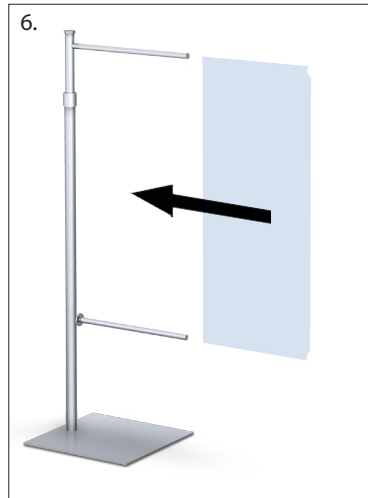
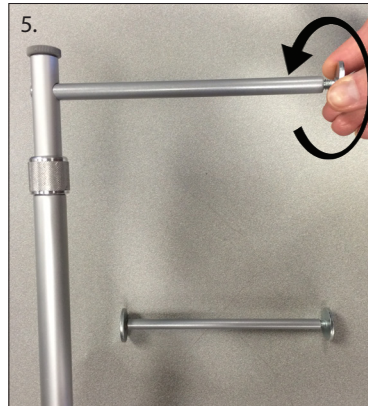
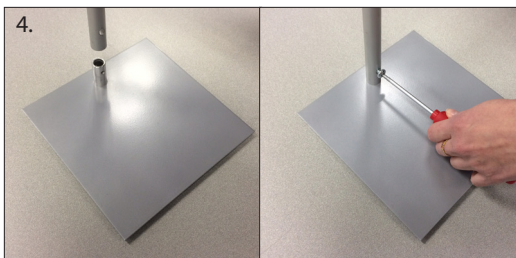
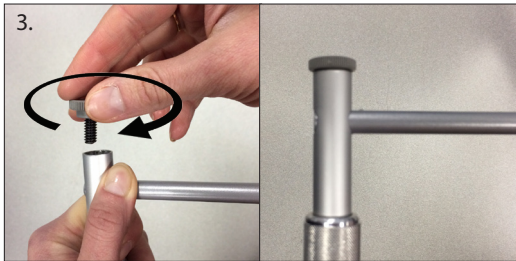
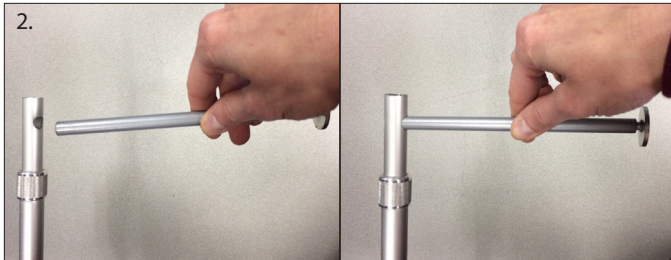
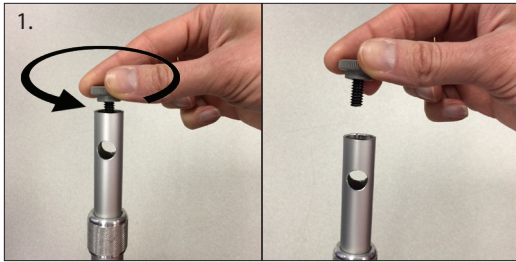


# CounterTop Banner Stand™ - CTV Series

1. Remove the top knob screw.
2. Insert the rod into the hole of the upright.
3. Reattach the top knob screw.
4. Connect the base to the upright using the screw provided.
5. Remove the rod screw caps.
6. Install the graphic.
7. Reattach the rod screw caps.

NOTE: Model shown below may differ from your model. Although the number of upright sections may change, assembly instructions remain the same.



CTV9 shown